

For further information on these products,  
please visit the Zebra web site at:

[www.zebra.com](http://www.zebra.com)



### Zebra Technologies

#### European Headquarters

Zebra House, The Valley Centre  
Gordon Road, High Wycombe  
Buckinghamshire HP13 6EQ  
United Kingdom

Tel: +44 (0)1494 472872

Fax: +44 (0)1494 450103

#### Regional Sales Office

Mollsfeld 1  
D-40670 Meerbusch  
Germany

Tel: +49 (0) 2159 6768 0

Fax: +49 (0) 2159 6768 22

#### Regional Sales Office

50 rue Marcel Dassault  
F-92100 Boulogne-Billancourt  
France

Tel: +33 (0)1 55 20 93 93

Fax: +33 (0)1 55 20 93 99

#### International Headquarters

333 Corporate Woods Parkway  
Vernon Hills, IL 60061-3109  
USA

Tel: +1 847 793 2600

Fax: +1 847 913 8766

### Other Locations

*United States:* California, Florida, Rhode Island,  
Wisconsin

*Europe:* Italy, the Netherlands, Poland,  
Spain, Sweden

*Asia-Pacific:* Australia, China, Japan, Singapore,  
South Korea

*Middle East:* Dubai

© 2005 Zebra Technologies  
Europe Limited  
Printed in the UK

Full Line  
#12520L Rev. 4 (06/05)



FS-30902  
An ISO 9000 registered company

Zebra  
Technologies

THERMAL, ON-DEMAND  
BAR CODE LABEL  
AND RECEIPT PRINTERS,  
SOFTWARE AND SUPPLIES



Reliability on demand™

## The Zebra® Line at a glance:

### RFID Printers

Page 4

### High-Performance Printers

Page 5

### Industrial and Commercial Printers

Pages 6-7

### Commercial Printers

Pages 8-9

### Desktop Printers

Pages 10-11

### Mobile Printing Solutions

Pages 12-15

### OEM Print Engines

Page 16

### Genuine Zebra Supplies and Parts

Page 17

### Label Design and Integration Software

Page 18

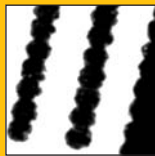
### Connectivity Solutions

Page 19

## Thermal Printing Looks Great, Saves Money



Laser-400dpi



Dot Matrix-72dpi



Thermal-200dpi

When scanning accuracy is important, nothing beats thermal printing. And it saves money compared to printing with costly laser toner cartridges.

# DEDICATED TO YOUR SUCCESS

Why do more than 90% of the Fortune 500 companies turn to Zebra for their bar code and labelling solutions?

It starts with Zebra products. They're solid. They're tough. They're simply the most reliable in the industry. They're backed by world-class sales support and service that ensure our customers get the most out of their labelling systems. Zebra printers, supplies and software help thousands of companies, in more than 95 countries, operate more efficiently and improve the way they serve their customers.

Companies who rely on Zebra are increasing their edge over the competition because Zebra is at the forefront of technology, bringing advanced connectivity, RFID and mobile printing solutions to the world's best-performing printers. Whether you're looking to seamlessly integrate bar coding into a growing operation or to improve an existing system, Zebra has a solution that's right for your business.



Reliability on demand™



### RFID Applications

- Supply chain management
- Book, videotape and sensitive document tracking
- Package and cargo tracking
- Re-usable container tracking
- Work-in-process
- Access control and security systems
- Capital asset labelling/tracking
- Patient wristbands
- Visitor passes



### Xi Series Applications

- High-volume, mission-critical applications
- Compliance labelling, such as AIAG, ODETTE and UCC/EAN 128
- High-resolution printing
- Wide-label applications

### R110XiIIIPlus™ RFID Printer/Encoder **ZebraLink™**

The high-performance R110XiIIIPlus provides the widest range of supported 13.56MHz RFID transponders. It delivers the legendary round-the-clock reliability and heavy-gauge-steel durability of Zebra's highly regarded Xi™ platform, as well as full 104mm print width, 203dpi resolution and extensive connectivity choices.

### R2844-Z™ RFID Desktop Printer/Encoder

Fulfilling the need for a compact RFID printing solution that can encode smart labels at the point of use, the R2844-Z is one of the most versatile in the industry!

### Xi Series **ZebraLink™**

XiIIIPlus printers are the ones you need when the going gets tough. Heavy gauge steel frames give Xi Series printers the strength to handle hard knocks, dirt, dust and harsh chemicals. When the work is critical and there's a lot at stake, your printer has to handle the pressure. If it's an Xi Series printer, you can be confident it will deliver 24x7. These rugged printers require very little maintenance, even when you run them around the clock.

And if you need speed, the Xi Series printers have the fastest throughput in the industry.

#### RFID Printers At-a-Glance

Model	Resolution	Max. Print Width	Max. Print Length	Max. Speed/second
R110XiIIIPlus	203dpi	104mm (4.1")	991mm (39")	203mm (8")
R2844-Z	203dpi	104mm (4.1")	991mm (39")	102mm (4")

#### XiIIIPlus Series At-a-Glance

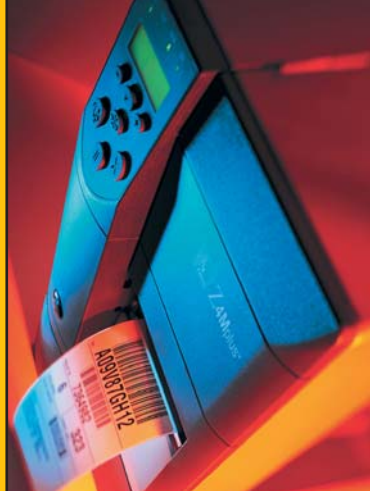
Model	Resolution	Max. Print Width	Max. Print Length	Max. Speed/second
110XiIIIPlus	203/300/600dpi	104mm (4.1")*	991mm (39")	254mm (10")
140XiIIIPlus	203dpi	128mm (5.04")	991mm (39")	305mm (12")
170XiIIIPlus	203/300dpi	168mm (6.6")	991mm (39")	305mm (12")
220XiIIIPlus	203/300dpi	216mm (8.5")	991mm (39")	254mm (10")

\*Note: for 600dpi option max. print width is 81mm (3.2")



### 1055L™ Applications

- Shipping/receiving
- Compliance labelling, such as AIAG and ODETTE
- Product labelling (Part ID etc.)
- Asset, product and document tracking
- Work-in-process
- Warehouse inventory/shelf labelling



### Z Series™ Applications

- Shipping/receiving or other compliance labelling
- Asset tracking
- Inventory control
- Ticketing
- Work-in-process

## 6 Industrial and Commercial Printers

## Industrial and Commercial Printers

7

### 1055L



S Series printers fit your industrial applications and your budget. The industrial steel-frame construction of the printer housing, drive gears and other critical components assures maximum durability and dependable performance, even when used in medium- to high-volume printing in manufacturing or industrial environments.

These popular, flexible printers meet the needs of first-time and experienced users, offering on-demand compliance labelling, single or multiple-up label printing, wide-label printing and variable resolution settings.

### Z Series



Z Series printers with standard flash memory are competitively priced, state-of-the-art printers that you can customise to your application. With print speeds of up to 254mm (10") per second, they are some of Zebra's fastest printers.

The Z4Mplus™ and Z6Mplus™ metal printers are the price/performance leaders in their class with the most standard features. A full-metal enclosure and die-cast metal base, frame and print mechanism add to their rugged yet sleek design. Intuitively designed to be user-friendly, they feature colour-coded operator cues, auto-calibration, standard LCD front panel, wide paper path and a full-size media window.

#### S Series At-a-Glance

Model	Resolution	Max. Print Width	Max. Print Length	Max. Speed/second
1055L	203/300dpi	104mm (4.1")	2692mm (106")	203mm (8")

#### Z Series At-a-Glance

Model	Resolution	Max. Print Width	Max. Print Length	Max. Speed/second
Z4Mplus	203/300dpi	104mm (4.1")	4202mm (165")	254mm (10")
Z6Mplus	203/300dpi	168mm (6.6")	2946mm (116")	254mm (10")



### 2746e Applications

- Product marking
- Shipping/receiving
- Logistics and inventory control
- Freshness code labelling

### Stripe® S600™ Applications

- Professional/business offices
- Hospitals and healthcare; medical laboratories
- Incoming product labelling
- Receipts and ticketing
- On-demand shipping labels and parts tracking



## 2746e

These economical metal printers are ideal for commercial or light industrial applications that need low to medium volumes of labels. They are easy to use, with colour-coded operator cues to simplify loading and operation. The 2746e printer is programmed using the simple EPL2 programming language.

There is a range of options including an Ethernet adaptor, real-time clock and keyboard display unit (KDU).

## Stripe S600



The economical, full-size Stripe S600 printers are in a class all of their own. They accommodate a full-size roll of media within the printer, minimising media maintenance and label contamination by airborne dust or moisture.

Lightweight, yet highly durable, these printers can be moved easily from one workstation to the next, wherever they are required. Better still, purchase more than one of these extremely affordable printers for distributed printing throughout your company. Stripe S600 printers are perfect for moderate printing needs in commercial or light industrial applications.

### 2746e At-a-Glance

Model	Resolution	Max. Print Width	Max. Print Length	Max. Speed/second
2746e	203dpi	104mm (4.1")	558mm (22")	152mm (6")

### S600 At-a-Glance

Model	Resolution	Max. Print Width	Max. Print Length	Max. Speed/second
S600	203dpi	104mm (4.1")	991mm (39")	152mm (6")





### Desktop Applications

- Small offices/home offices
- Retail/product marking/shelf labelling
- Healthcare and medical laboratories
- Point-of-sale
- Receipts and ticketing
- Mailing and shipping labels
- File folder labelling



### LP/TLP 2824-Z\*, LP/TLP 2844-Z and TLP 3844-Z™ Desktop Series



These affordable printers bring unmatched performance and versatility to applications requiring a space-saving desktop printer.

With a range of connectivity choices including an internal PrintServer option as well as ZebraLink™'s Alert and WebView capabilities, these are the most powerful and feature-rich of all the desktop printers.

### EPL Desktop Series Printers

If you thought you couldn't afford a professional label printer for *all* your applications, THINK AGAIN! These classy little printers bring fast, professional labelling to your desk, small office, laboratory or anywhere you need to print small numbers of bar code labels, receipts or tags. They are designed for easy use, so even complete beginners will find them simple to set up and operate, and they can be programmed using the simple EPL2 programming language.

Sturdily built with a double-walled ABS casing, the LP/TLP 2844 and 2824 offer many "big printer" features but at an extremely affordable price. If you need to pack a lot onto a small label, then the higher-resolution printing of the TLP 3842™ will give sharper definition with its 300dpi printhead.

### Desktop Series At-a-Glance

Model	Resolution	Max. Print Width	Max. Print Length	Max. Speed/second
LP/TLP 2824-Z*	203dpi	56mm (2.2")	991mm (39")	102mm (4")
LP/TLP 2844-Z	203dpi	104mm (4.1")	991mm (39")	102mm (4")
TLP 3844-Z	300dpi	104mm (4.1")	991mm (39")	102mm (4")
LP/TLP 2844	203dpi	104mm (4.1")	558mm (22")	102mm (4")
LP/TLP 2824	203dpi	56mm (2.2")	558mm (22")	102mm (4")
TLP 3842	300dpi	104mm (4.1")	558mm (22")	51mm (2")

\*Available Q3 2005



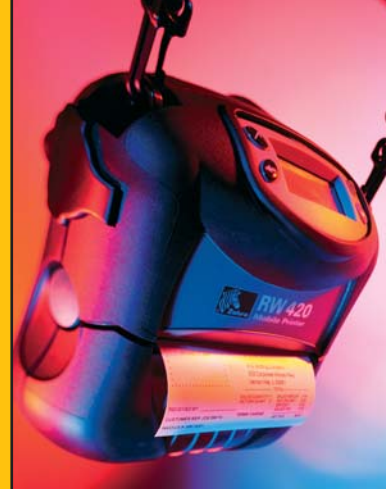
### The QuickLink™ Connection

The QL Series signals an evolution in wireless connectivity! Just choose the connectivity that suits your wireless needs and link up!

- 802.11b
- Bluetooth®
- IrDA®

### Mobile Applications

- Point of transaction processing
- Shelf labelling
- Price marking
- Bin labelling
- Product identification
- Receipt printing
- Field sales service and delivery slips
- Event and passenger ticketing
- Parking tickets and violations
- Queue busting



## 12 Mobile Printing Solutions

### QL Series Receipt and Label Printer

Designed with the most advanced technology in rubberised over-moulding, the QL printers are both rugged and of minimal weight. They are perfect for a wide variety of indoor/outdoor mobile applications such as shelf and price marking, ticket and receipt printing, product identification and other labelling.

With three model sizes and the widest choice of connectivity options of any mobile printer today, the QL series offers a flexible solution that can adjust to meet your changing business needs.

The QL 420 is an ideal mobile printer for warehouse work with its 99mm print width. It can be operated in a forklift or vehicle using the optional mounting and can take fan-fold media, increasing the printing capability from a single load.

## Mobile Printing Solutions

13

### RW Series

The RW 420™ is designed with the travelling workforce in mind. Whether it's receipts, invoices or service reports, the RW 420 provides a convenient way of printing them en route. Its wireless connectivity options avoid the need for a cable, and battery-charging is not a problem. With the vehicle cradle, it can be recharged whilst travelling.

Carry the RW 420 on a belt or strap while on foot then stow it in the vehicle cradle while driving to the next call. Uniquely designed for harsh outdoor environments, you can bounce it around, carry it in the rain, drop it on the pavement and still expect reliable performance. Magnetic stripe reader and EMV-certified smart-card-reader options allow payments to be taken on delivery.

### Mobile Direct Thermal Printers At-a-Glance

Model	Dimensions (H, W, D)	Weight kg (lb)	Max. Print Width	Max. Speed/second
QL 220	182mm x 91mm x 75mm	0.6 (1.3)	48mm (1.9")	76mm (3")
QL 320	203mm x 117mm x 79mm	0.7 (1.65)	72mm (2.8")	102mm (4")
QL 420	190mm x 152mm x 76mm	0.9 (2)	99mm (3.9")	102mm (4")
RW 420	175mm x 160mm x 76mm	0.9 (2)	104mm (4.1")	76mm (3")

All Zebra mobile printers print at 203 dpi



### PT403™/PA403™ Applications

- Warehouse
- Manufacturing
- Durable thermal transfer labels on PT403
- Vehicle mounting option



### Genuine Zebra Accessories

- Spare batteries
- Chargers
- Radios
- Vehicle mounts
- Cases/boots
- Holsters
- Stands

### PT403/PA403

These rugged printers offer a comprehensive list of barcode symbologies and resident scalable fonts, making them ideal for warehouse and manufacturing applications. The PT403 incorporates a unique snap-in ribbon cartridge to enable easy mobile thermal-transfer printing of long-life labels.

### Cameo™ Receipt Printers

Receipt printing is quick and efficient with Cameo Series mobile receipt printers. These are the lightest Zebra printers, weighing only 0.45kg to 0.9kg each, making them easy to carry, whilst offering considerable durability. Wireless connectivity including Bluetooth, as well as magnetic card readers and smart card readers, make these printers ideal for queue-busting and point-of-sale applications.

### Accessories for Zebra Mobile Printers

Zebra offers a variety of chargers and batteries, cases and boots, cables and radios, and vehicle mounts, to meet the needs of users in multiple applications. Ask your sales representative for more details on accessories for your mobile printer.

### Mobile Thermal Printers At-a-Glance

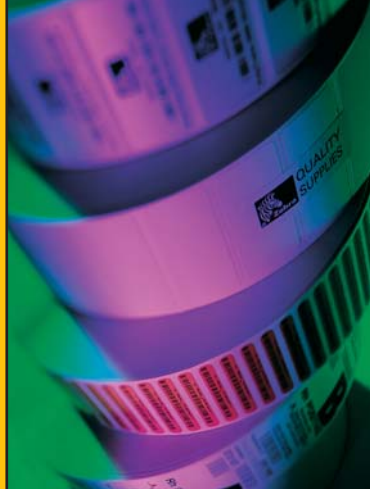
Model	Dimensions (H, W, D)	Weight kg (lb)	Max. Print Width	Max. Speed/second
PT403 (TT)	200mm x 233mm x 73mm	1.6 (3.5)	104mm (4.1")	76mm (3")
PA403 (DT)	200mm x 233mm x 73mm	1.4 (3)	104mm (4.1")	76mm (3")
Cameo 2™	167mm x 93mm x 66mm	0.4 (1)	48mm (1.9")	76mm (3")
Cameo 3™	157mm x 119mm x 66mm	0.6 (1.4)	72mm (2.8")	76mm (3")





### PAX4™ Applications

- Pallet labelling
- Case and carton applications
- Fully automatic print/apply systems
- Mission-critical industrial applications



### Genuine Zebra Supplies and Parts

- Maximise print quality from your Zebra printer
- Supplies that minimise printhead wear and tear, reducing maintenance costs
- Printheads and parts thoroughly engineered and inspected for optimal printer performance

## PAX4 Print Engines



With improved serviceability, faster first-label-out time and a fully functional real-time clock, the PAX4 print engines deliver what it takes to make print-and-apply solutions super performers. The 110PAX4™ and 170PAX4™ print engines are the performance leaders in mission-critical print-and apply applications.

With enhanced connectivity, including wireless and Ethernet, along with all-metal construction, PAX4 print engines deliver outstanding value, reliability and durability. Through ZebraLink, PAX4 print engines can send you instant status alert messages and give you Web-based centralised control, allowing you to troubleshoot quickly and keep production lines moving.

## Genuine Zebra Supplies

Zebra-brand labels, ribbons and tags make a superior impression. Our supplies are specially engineered to optimise the performance of Zebra printers, which means less wear and tear on your printheads and reduced cost of maintenance.

Zebra carries more than 1,000 combinations of labels, ribbons and tags – more than 300 of which are UL-recognised and CSA-accepted. Our Zip Ship stocking programme has hundreds of ribbons and labels readily available – including synthetic labels. Zebra's sample programme means you can try before you buy.

In addition, our media specialists can help determine the right combination of media and ribbons so you get crisp, long-lasting, scannable images that resist smudging and smearing, even when exposed to dirt, chemicals or extreme heat.

## Genuine Zebra Parts

For quality and performance, nothing outperforms Zebra printers. One good reason is the quality of the parts inside every one of our bar code printers – tested, designed and manufactured to meet our exacting equipment specifications. With Genuine Zebra Parts, you will continue to enjoy the same durability and trouble-free operation for which Zebra is known.

PAX4 Series At-a-Glance				
Model	Resolution	Max. Print Width	Max. Print Length	Max. Speed/second
170PAX4	203/300dpi	168mm (6.6")	991mm (39")	305mm (12")
110PAX4	203/300/600dpi	104mm (4.1")	991mm (39")	305mm (12")



## Connectivity Choices

- ZebraNet® 10/100 Print Server
- ZebraLink real-time connectivity and control
- ZebraNet® PrintServer II
- ZebraNet Wireless Print Server
- Bluetooth
- Wi-Fi® 802.11b
- Zebra Portable Radio

## 18 Label Design and Integration Software

### Zebra plug-and-print, ERP-friendly label design software makes bar code labelling easy!

**BAR-ONE®** Label Design and Integration Software products ensure easy configuration and fast printing from Zebra printers. This range of software includes products optimised for major business applications including mySAP Business Suite, resulting in faster implementation, reduced development costs and superior label output.

Available from July 2005, **ZebraDesigner™** is a new software family that extends the label design capabilities to include ZPL, EPL and CPCL command languages and Unicode support, as well as offering a user interface supporting English, French, Italian, German, Spanish and Portuguese amongst other languages. Advanced versions offer wizard-based RFID printer/encoder design tools.

## Connectivity Solutions

19

### ZebraLink

Only ZebraLink gives you the power to control and monitor your printers any time, anywhere, using its powerful features:

- **Alert** enables a Zebra printer to send status messages via any e-mail-enabled device (e.g. pagers, cell phones, PCs and PDAs)
- **WebView** enables the remote monitoring and configuration of Zebra printers using Web-based network tools

The internal or external **ZebraNet 10/100 Print Server** and **ZebraNet PrintServer II** make it easy to set up, manage and monitor a Zebra printer linked to your Ethernet network. The 802.11b-compliant **ZebraNet Wireless Print Server** removes network tethers to provide location-independent printer operation.

Harnessing the power of ZebraLink, **ZebraNet™ Bridge** merges printer and print server management capabilities (such as WebView and ZebraNet Alert) within a single, easy-to-use application with a familiar Microsoft® Windows® look and feel.

Zebra mobile printers bring you versatile **Bluetooth** technology or **Wi-Fi 802.11b** wireless local area network (WLAN) connectivity. The **Zebra Portable Radio (ZPR™)** clips onto Symbol® SPT 1700/1800 and PPT 2700/2800 handheld devices, and enables short-range wireless communication with Zebra mobile printers.