

IP Cube Camera

ACM-4000 series

Ver. 080617

Quick Installation Guide



www.acti.com

1

Getting Started

1.1 PACKAGE CONTENTS

ACM-4000 series



Power Adaptor (Option)



Product CD



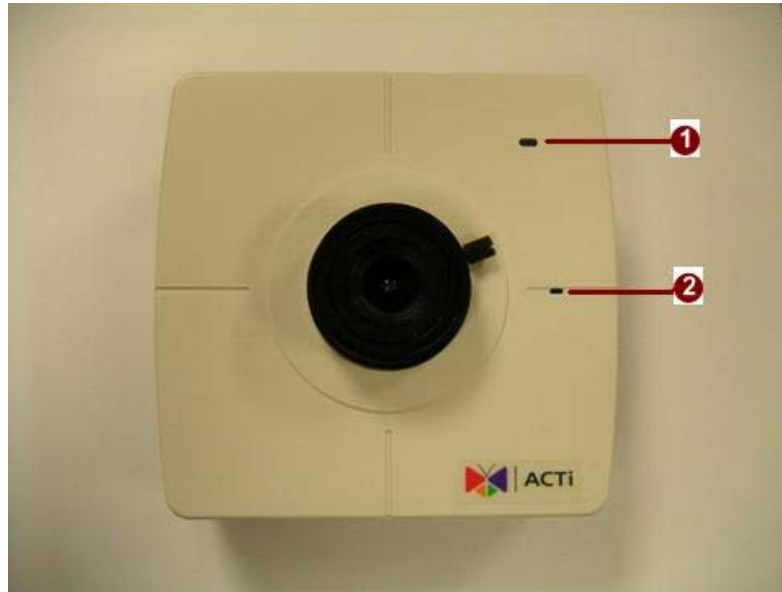
Camera Stand



Warranty Card



1.2 PHYSICAL DESCRIPTION



1. **Action LED Indicator**

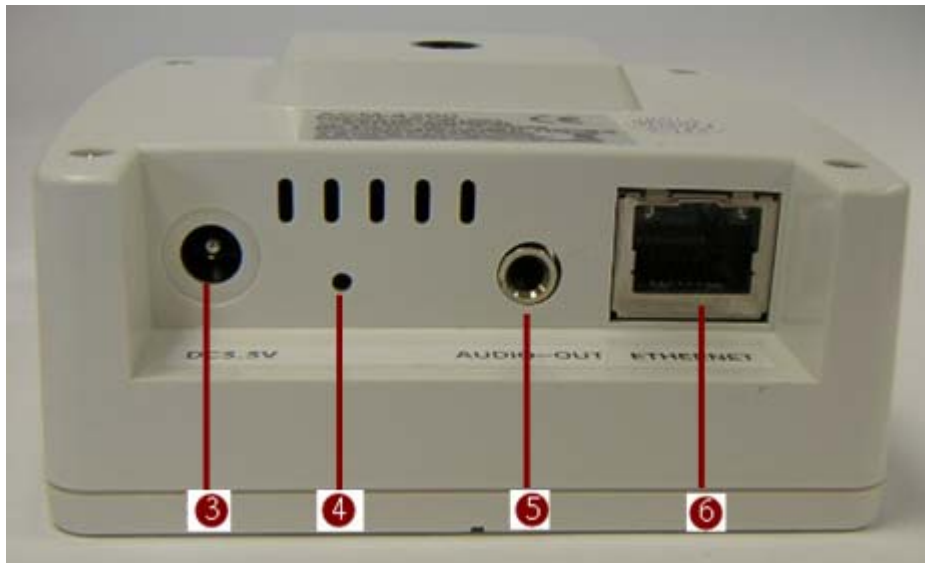
The LED will light up after IP camera has successfully completed the boot process

2. **Built-in Microphone**

Sensitivity: $-42\text{dB} \pm 3\text{dB}$ (0dB=1V/Pa at 1KHz)

S/N Ratio: More than 58dB

Directivity: Omni-directional



3. Power Input

Please use power supply of input DC 3.3V only.

4. Reset Button

Step 1: Switch off IP device by disconnecting the power cable

Step 2: Press and continue to hold the Reset Button. Reconnect the power cable while continuing to hold the reset button.

Step 3: Keep holding the reset button depressed around 6 seconds, then release the reset button. The unit will start up with factory default settings.

5. Audio Output

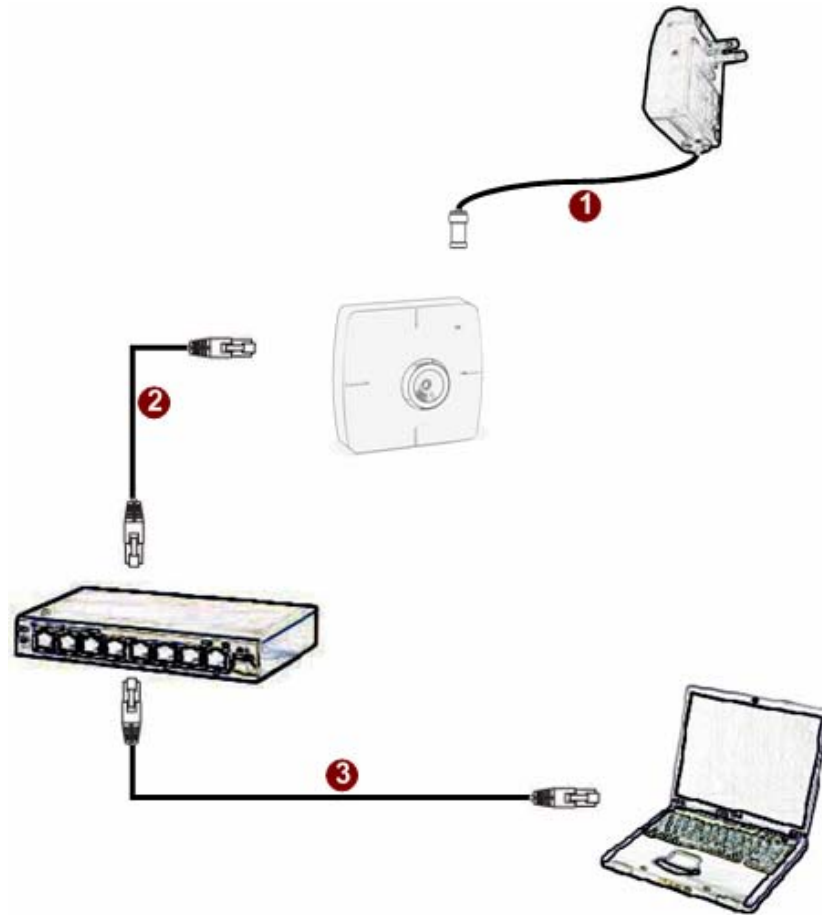
The IP device supports audio output with earphone jack.

6. Ethernet Port

The IP device connects to the Ethernet via a standard RJ45 connector. Supporting NWAY, this IP device can auto detect the speed of local network segment (10Base-T/100Base-TX Ethernet).

1.3 BASIC CONNECTIONS

Follow the procedures below to connect the IP device to the respective apparatuses.



1. Connect the power adaptor to IP device
2. Connect IP device's ethernet port to an Ethernet (RJ45 connectors). If your IP device has PoE built-in, you can regard it as a PD and connect it directly to a PSE device like PoE switch.
3. Connect a PC to the Ethernet hub (RJ45 connectors)



NOTE: You may find a support package for help you getting familiar with PoE. Please visit our web site, and get the support document TS-00040.

2

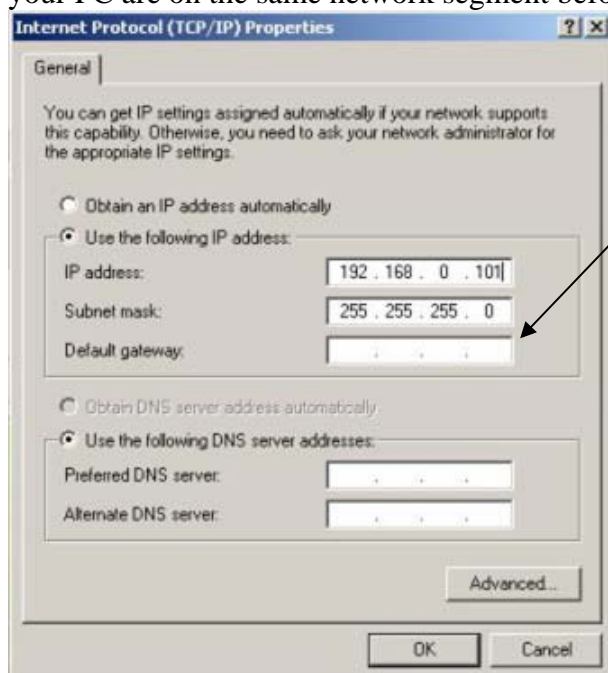
Quick Tour

This section guides you with a quick tour on this IP device.

2.1 Configure this IP Device

2.1.1 Make sure network environment

Default IP of this IP device is 192.168.0.100. Please make sure this IP device and your PC are on the same network segment before running the installation.

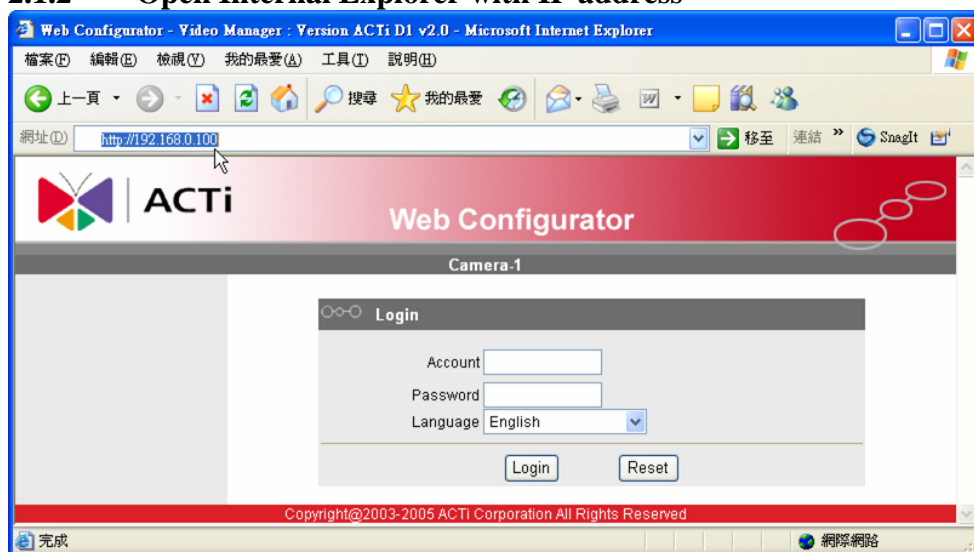


Please set the settings as below.

IP address: 192.168. 0.xxx
Subnet mask: 255.255.255. 0

(**NOTE:** xxx should be a number from 1 to 254, but 100 is excepted.)

2.1.2 Open Internal Explorer with IP address

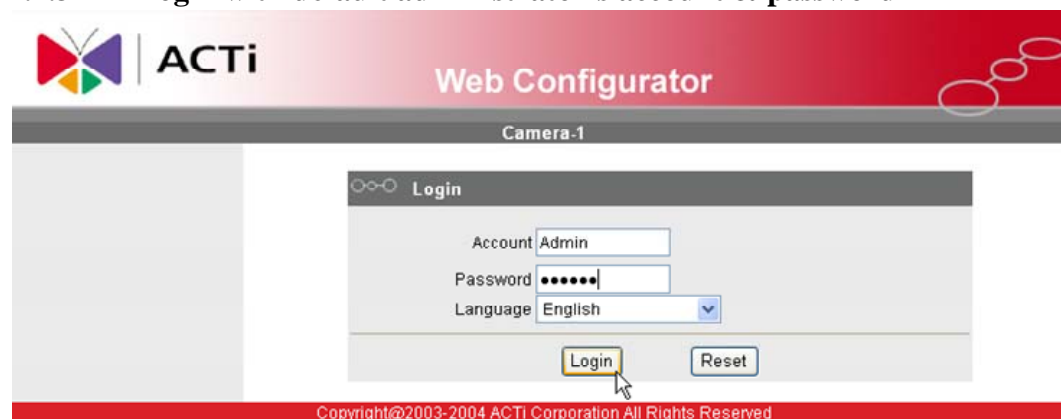


NOTE: If your web browser is earlier than IE6, then download IE6 is recommended.



NOTE: This IP device default IP address is set to 192.168.0.100

2.1.3 Login with default administrator's account & password

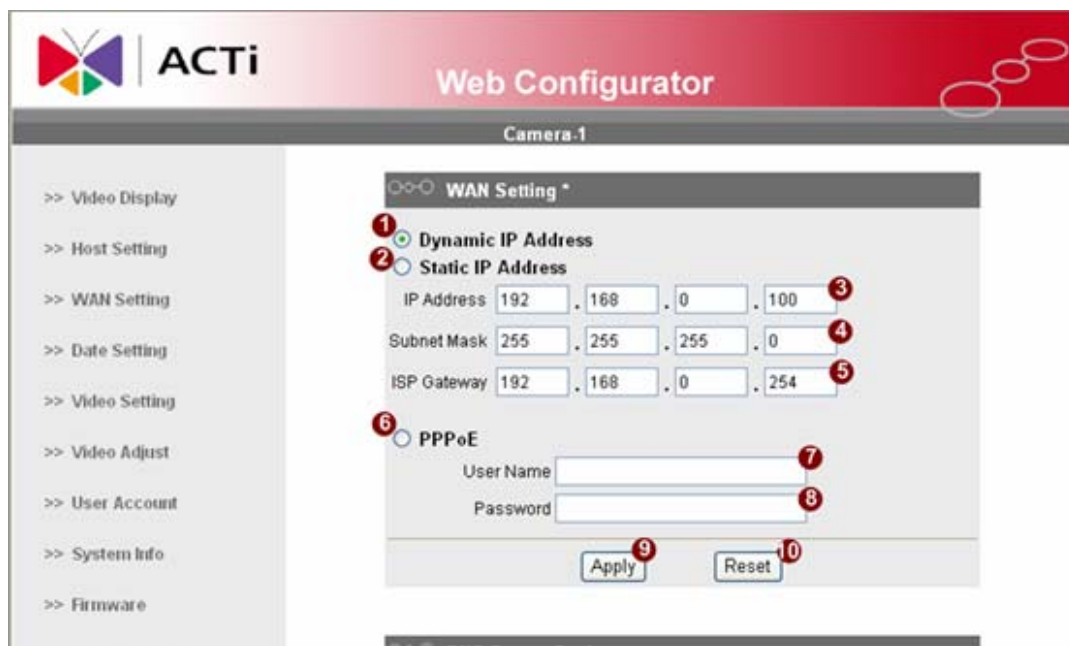


NOTE: Default administrator account is set to **Admin**, password is set to **123456**, and click **Login** button.

2.1.4 Preview the video





2.1.5 Set the new IP address



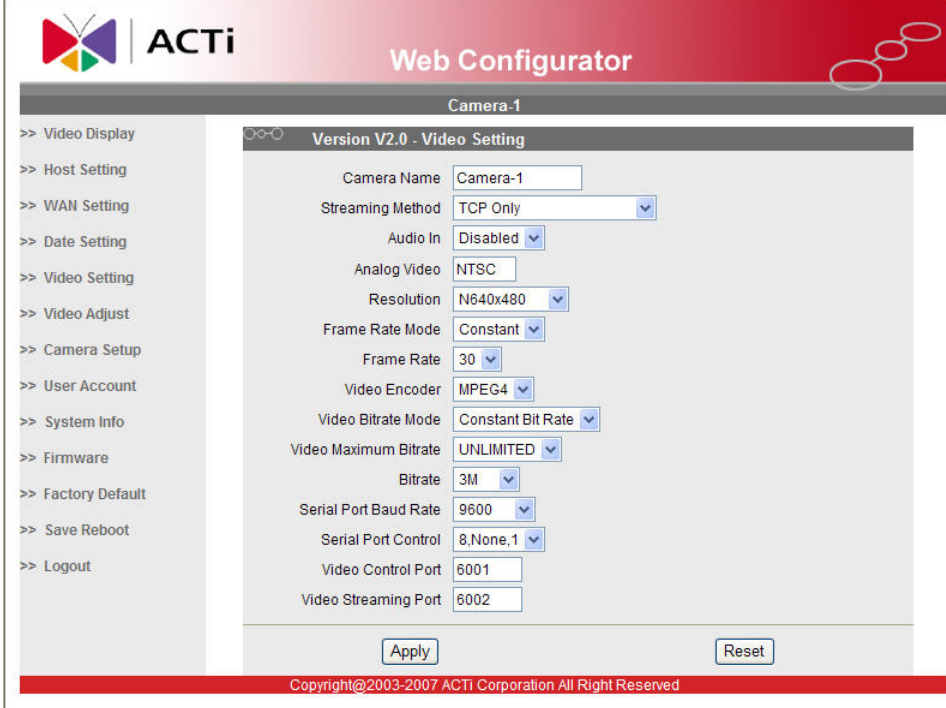
***IP Address** : The default IP address is 192.168.0.100.

***Subnet Mask** : The default subnet mask is 255.255.255.0

***Click**  button

	NOTE: In your Client PC, please make sure the setting of Network Connections Type is set to Auto Negotiation, since this IP device follows MII standard. Otherwise, you might not see the live image.
	IMPORTANT: After the IP address is changed, please record this IP address. There's no way to connect to the IP device if user forgets the new IP address.

2.1.6 Check Default Video Setting



ACTi Web Configurator

Camera-1

Version V2.0 - Video Setting

Camera Name: Camera-1

Streaming Method: TCP Only

Audio In: Disabled

Analog Video: NTSC

Resolution: N640x480

Frame Rate Mode: Constant

Frame Rate: 30

Video Encoder: MPEG4

Video Bitrate Mode: Constant Bit Rate

Video Maximum Bitrate: UNLIMITED

Bitrate: 3M

Serial Port Baud Rate: 9600

Serial Port Control: 8,None,1

Video Control Port: 6001

Video Streaming Port: 6002

Apply Reset

Copyright©2003-2007 ACTi Corporation All Right Reserved

2.1.7 Click **Save Reboot** to restore all settings and please wait about 30 seconds for system reboot.